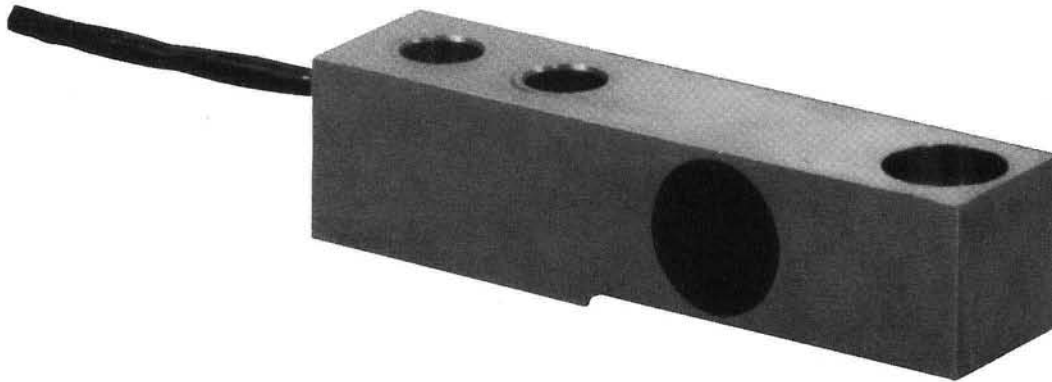


BLC



BEAM LOAD CELL

500 TO 10,000 LBS



- STAINLESS STEEL CONSTRUCTION
- AVAILABLE WITH COUNTERBORED LOAD HOLE
- LOW PROFILE
- AVAILABLE NTEP CERTIFIED

The BLC load cell combines the advantages of a bending beam and ruggedness of a shear beam into one product. This in conjunction with stainless steel construction have made the BLC a consistent choice in new scale manufacturing as well as end user applications.

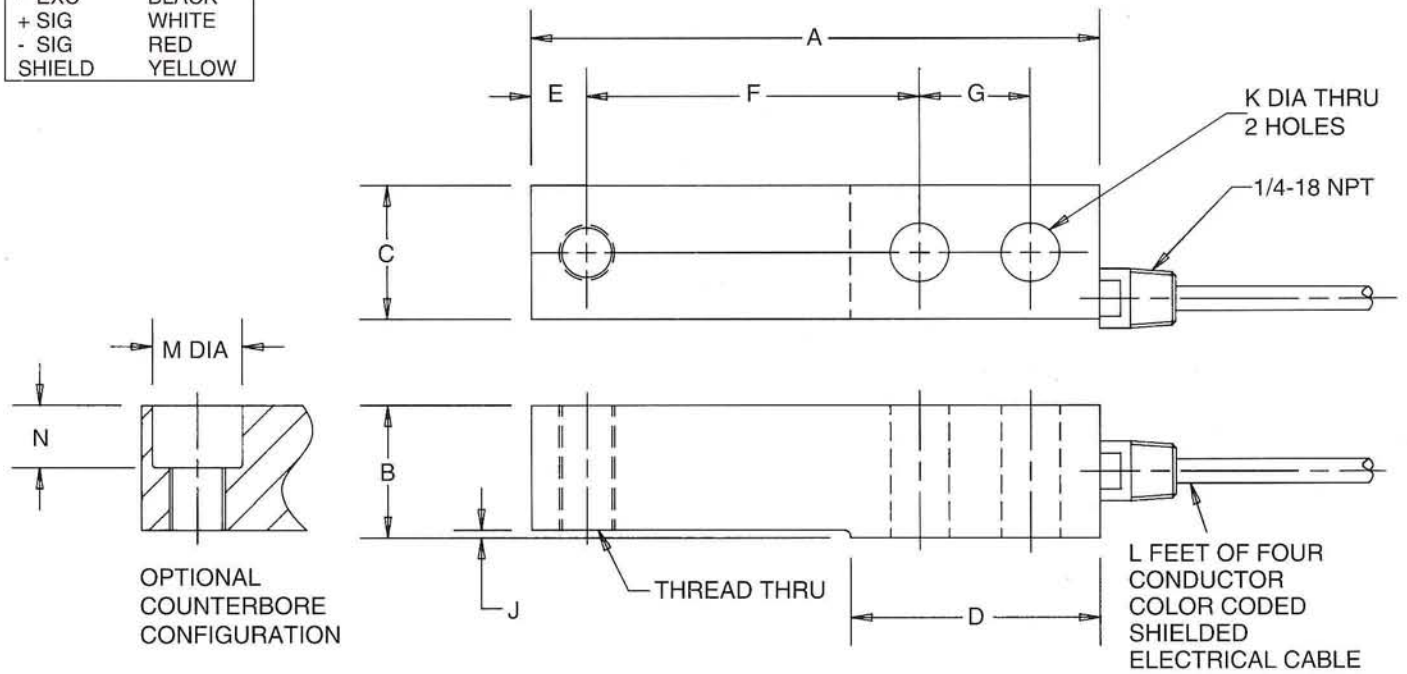


TECHNICAL DATA

	500	1K	2.5K	4K	5K	10K
Rated Capacity (lbs)						
Rated Output (mV/V)			3.0 ± .003			
Combined Error (%)						
to Non-Linearity and Hysteresis (%)			0.03			
Nonrepeatability (%)			0.01			
Creep in 20 min. (%)			0.03			
Zero Balance (%)			1.0			
Compensated Temp. Range (°F/°C)			+15 to +104/-10 to +40			
Temp. Effect:						
Output (% of load/1000°F)			.008			
Zero Balance (%/100°F)			0.25			
Terminal Resistance:						
Input (ohms min.)			1000			
Output (ohms)			1000 ± 10			
Excitation Voltage:			10			
Maximum VDC or VAC rms			5000			
Insulation Resistance (megohms min.)			150			
Max. Load, Safe (%)			300			
Max. Load Ultimate (%)			100			
Max. Side Load, Safe (%)						
Deflection at Rated Load (inches)	.010	.010	.010	.010	.012	0.12
Weight (lbs.)	2	2	2	2	3.5	4.5

BLC BEAM LOAD CELL 500 TO 10,000 LBS

CABLE COLOR CODE	
+ EXC	GREEN
- EXC	BLACK
+ SIG	WHITE
- SIG	RED
SHIELD	YELLOW



CAPACITY (POUNDS)	DIMENSIONS (INCHES)												
	A	B	C	D	E	F	G	J	K	L	M	N	THREAD
500, 1K, 2.5K, 4K	5.25	1.19	1.21	2.27	.605	3.00	1.00	.07	.52	10	.81	.56	1/2-20 UNF-2B
5K	6.75	1.44	1.45	3.00	.75	3.75	1.50	.10	.78	20	1.19	.67	3/4-16 UNF-2B
10K	6.75	1.94	1.69	3.00	.75	3.75	1.50	.35	.78	20	1.19	.79	3/4-16 UNF-2B